



Date: 04/16/12

Current Geography Selection: (1 Selected) Counties: St. Lawrence County

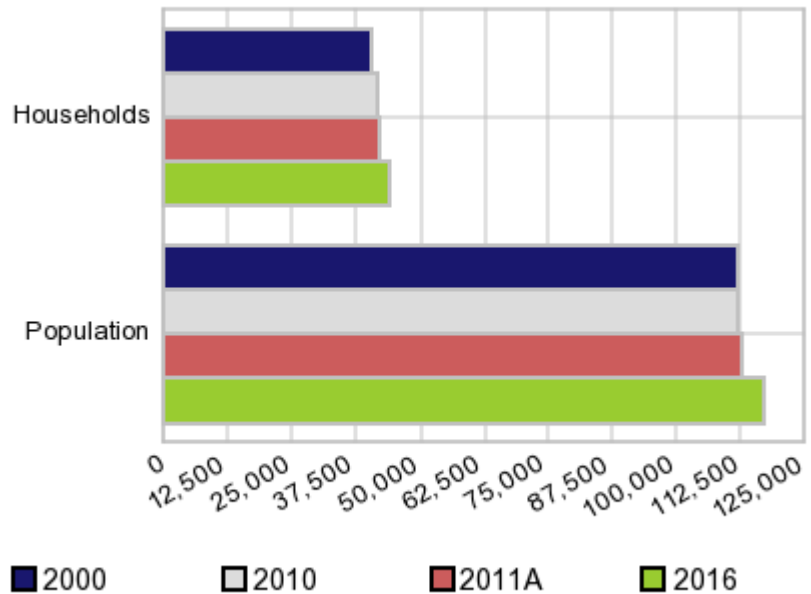
Executive Summary Report with Charts

Population Demographics:

The number of households in the study area in 2000 was **40,506** and changed to **41,605** in 2010, representing a change of **2.7%**. The household count in 2011A was **42,080** and the household projection for 2016 is **43,983**, a change of **4.5%**.

The population in the study area in 2000 was **111,931** and in 2010 it was **111,944**, roughly a **0.0%** change. The population in 2011A was **112,940** and the projection for 2016 is **116,885** representing a change of **3.5%**.

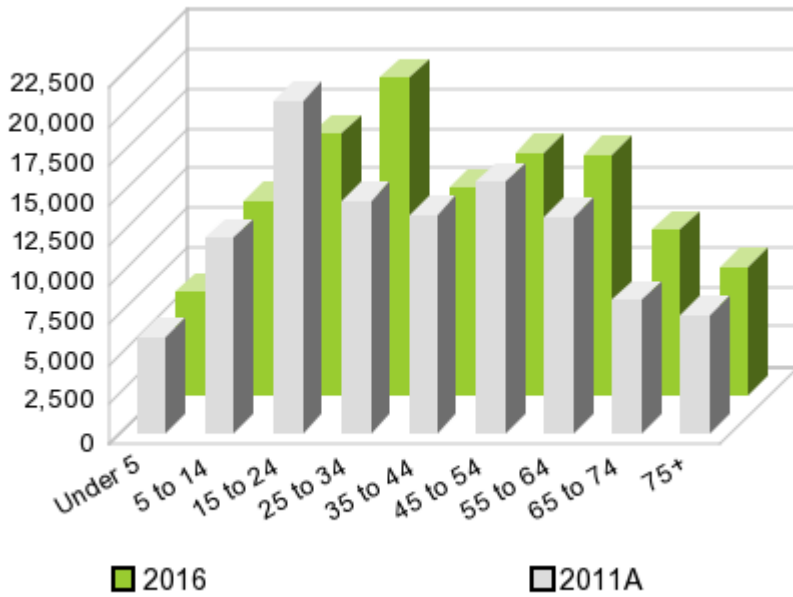
Population and Household Change



| | 2000 Census | 2010 Census | 2011A Estimate | 2016 Projection | Percent Change | |
|------------------|----------------|----------------|-------------------|--------------------|-----------------|-----------------|
| | | | | | 2000 to 2010 | 2011 to 2016 |
| Total Population | 111,931 | 111,944 | 112,940 | 116,885 | 0.0% | 3.5% |
| Total Households | 40,506 | 41,605 | 42,080 | 43,983 | 9.6% | 4.5% |

Population by Age

Age



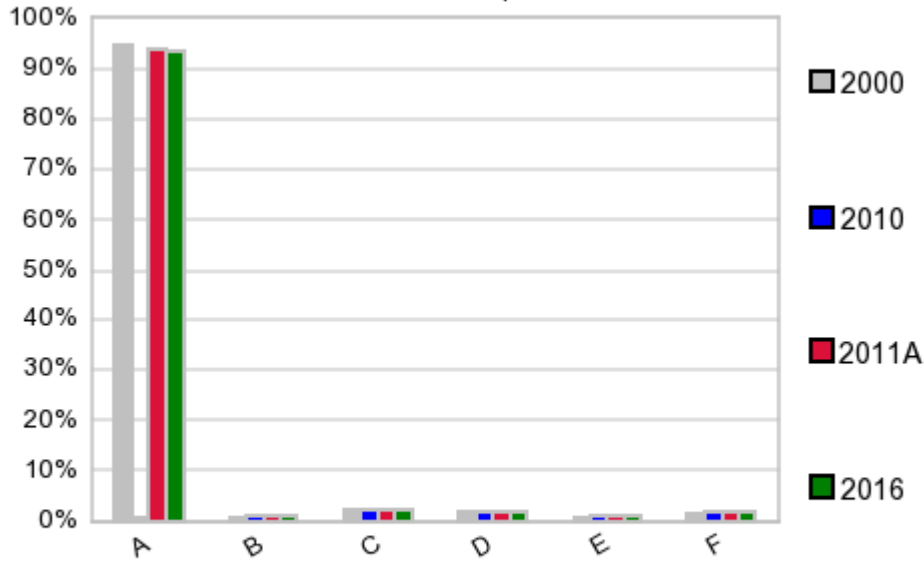
In 1990, the median age of the total population in the study area was **31**, and in 2000, it was **35**. The median age in 2011A is **37** and it is predicted to change in five years to **38** years. In 2011A, females represented **49.0%** of the population with a median age of **39** and males represented **51.0%** of the population with a median age of **35** years. In 2011A, the most prominent age group in this geography is **Age 45 to 54** years. The age group least represented in this geography is **0 to 4** years.

Age Groups*

| Age Groups* | 1990 Census | | 2000 Census | | 2011A Estimate | | 2016 Projection | | Percent Change | |
|-------------|-------------|-------|-------------|-------|----------------|-------|-----------------|-------|----------------|--------------|
| | Count | % | Count | % | Count | % | Count | % | 1990 to 2000 | 2011 to 2016 |
| 0 to 4 | 7,442 | 6.7% | 6,065 | 5.4% | 6,124 | 5.4% | 6,464 | 5.5% | -18.5% | 5.6% |
| 5 to 14 | 16,055 | 14.3% | 15,190 | 13.6% | 12,328 | 10.9% | 12,180 | 10.4% | -5.4% | -1.2% |
| 15 to 19 | 11,321 | 10.1% | 10,401 | 9.3% | 9,679 | 8.6% | 6,621 | 5.7% | -8.1% | -31.6% |
| 20 to 24 | 11,780 | 10.5% | 9,993 | 8.9% | 11,263 | 10.0% | 9,858 | 8.4% | -15.2% | -12.5% |
| 25 to 34 | 16,483 | 14.7% | 13,681 | 12.2% | 14,567 | 12.9% | 19,997 | 17.1% | -17.0% | 37.3% |
| 35 to 44 | 15,059 | 13.4% | 16,970 | 15.2% | 13,785 | 12.2% | 12,979 | 11.1% | 12.7% | -5.8% |
| 45 to 54 | 10,632 | 9.5% | 14,998 | 13.4% | 15,849 | 14.0% | 15,258 | 13.1% | 41.1% | -3.7% |
| 55 to 64 | 9,682 | 8.6% | 10,090 | 9.0% | 13,588 | 12.0% | 15,117 | 12.9% | 4.2% | 11.3% |
| 65 to 74 | 7,739 | 6.9% | 7,908 | 7.1% | 8,365 | 7.4% | 10,300 | 8.8% | 2.2% | 23.1% |
| 75 + | 5,781 | 5.2% | 6,635 | 5.9% | 7,373 | 6.5% | 8,065 | 6.9% | 14.8% | 9.4% |

Population by Race/Ethnicity

Race and Ethnicity Percent Composition



In 2011A, the predominant race/ethnicity category in this study area is **White**. The race & ethnicity category least represented in this geography is **Other**.

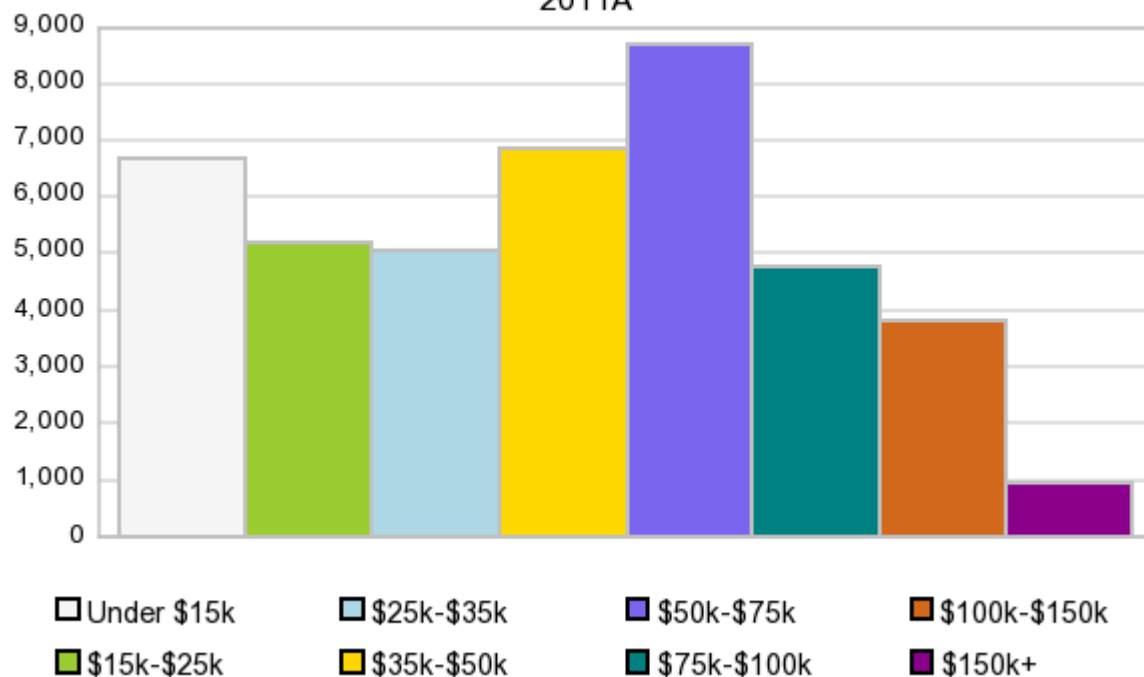
A: White
 B: Asian Pac Islr
 C: Black
 D: Hispanic
 E: Amer Indian or Alaska Native
 F: Other or Multi Race

| Race & Ethnicity | 2000 | | 2010 | | 2011A | | 2016 | | Percent Change | |
|----------------------------------|---------|-------|---------|-------|----------|-------|------------|-------|----------------|--------------|
| | Census | % | Census | % | Estimate | % | Projection | % | 2000 to 2010 | 2011 to 2016 |
| White | 105,782 | 94.5% | 105,064 | 93.9% | 105,939 | 93.8% | 109,397 | 93.6% | -0.7% | 3.3% |
| Black | 2,664 | 2.4% | 2,420 | 2.2% | 2,467 | 2.2% | 2,657 | 2.3% | -9.2% | 7.7% |
| American Indian or Alaska Native | 977 | 0.9% | 1,135 | 1.0% | 1,146 | 1.0% | 1,188 | 1.0% | 16.2% | 3.7% |
| Asian/Hawaiian/PI | 832 | 0.7% | 1,121 | 1.0% | 1,145 | 1.0% | 1,246 | 1.1% | 34.7% | 8.8% |
| Some Other Race | 773 | 0.7% | 670 | 0.6% | 722 | 0.6% | 776 | 0.7% | -13.3% | 7.5% |
| Two or More Races | 903 | 0.8% | 1,534 | 1.4% | 1,521 | 1.4% | 1,622 | 1.4% | 69.9% | 6.6% |
| Hispanic Ethnicity | 2,008 | 1.8% | 2,146 | 1.9% | 2,156 | 1.9% | 2,197 | 1.9% | 6.9% | 1.9% |
| Not Hispanic or Latino | 109,923 | 98.2% | 109,798 | 98.1% | 110,784 | 98.1% | 114,689 | 98.1% | -0.1% | 3.5% |

Households by Income

Households by Income Group 2011A

In 2011A the predominant household income category in this study area is **\$50K - \$75K**, and the income group that is least represented in this geography is **\$150K +**.



HH Income Categories*

| HH Income Categories* | 1990 Census | | 2000 Census | | 2011A Estimate | | 2016 Projection | | Percent Change | |
|-----------------------|-------------|-------|-------------|-------|----------------|-------|-----------------|-------|----------------|--------------|
| | Count | % | Count | % | Count | % | Count | % | 1990 to 2000 | 2011 to 2016 |
| \$0 - \$15,000 | 11,896 | 31.3% | 8,741 | 21.6% | 6,693 | 15.9% | 6,118 | 13.9% | -26.5% | -8.6% |
| \$15,000 - \$24,999 | 7,675 | 20.2% | 6,786 | 16.8% | 5,192 | 12.3% | 4,798 | 10.9% | -11.6% | -7.6% |
| \$25,000 - \$34,999 | 6,407 | 16.9% | 6,174 | 15.2% | 5,049 | 12.0% | 4,694 | 10.7% | -3.6% | -7.0% |
| \$35,000 - \$49,999 | 6,282 | 16.5% | 7,177 | 17.7% | 6,883 | 16.4% | 6,974 | 15.9% | 14.2% | 1.3% |
| \$50,000 - \$74,999 | 4,232 | 11.1% | 7,025 | 17.3% | 8,702 | 20.7% | 9,549 | 21.7% | 66.0% | 9.7% |
| \$75,000 - \$99,999 | 921 | 2.4% | 2,754 | 6.8% | 4,768 | 11.3% | 5,739 | 13.1% | 199.0% | 20.4% |
| \$100,000 - \$149,999 | 369 | 1.0% | 1,339 | 3.3% | 3,817 | 9.1% | 4,952 | 11.3% | 262.9% | 29.7% |
| \$150,000 + | 142 | 0.4% | 510 | 1.3% | 976 | 2.3% | 1,159 | 2.6% | 259.2% | 18.8% |
| Average Hhld Income | \$29,156 | | \$40,754 | | \$54,954 | | \$60,697 | | 39.8% | 10.5% |
| Median Hhld Income | \$23,971 | | \$32,499 | | \$44,304 | | \$48,923 | | 35.6% | 10.4% |
| Per Capita Income | \$10,383 | | \$14,748 | | \$23,288 | | \$25,999 | | 42.0% | 11.6% |

*This Census 2010 data has not yet been released

Current year data is for the year **2011**, 5 year projected data is for the year **2016**. More About Our Data.
Demographic data ' 2011 by Experian/Applied Geographic Solutions.

Business List data ' 2011 by D&B^{fi}. All rights reserved. All D&B information is powered by DUNSRight™, D&B's Quality Process.

' 2011. DDR is brought to you by Alteryx, Inc.

Alteryx, DemographicsNow.com and the Alteryx and DemographicsNow.com logos are trademarks of Alteryx, Inc. All rights reserved.

Privacy Statement | License Agreement